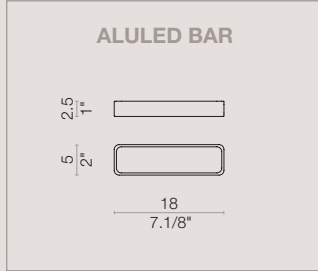


LET
LIGHT
ALULED
LIVE

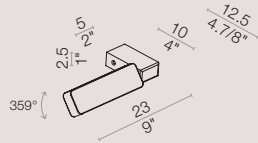
SCANGIFT®

WWW.SCANGIFT.COM

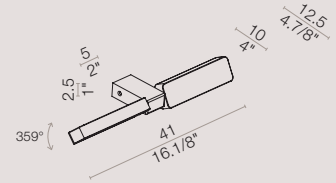
ALULED bar collection



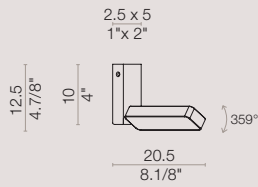
AP 1L



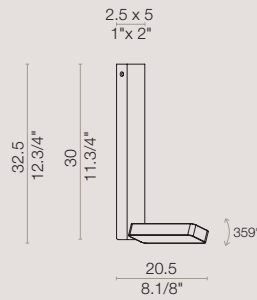
AP 2L



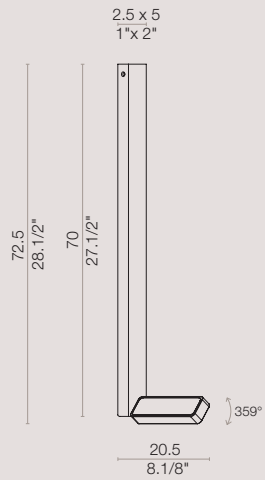
PL 10 1L



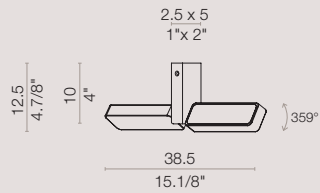
PL 30 1L



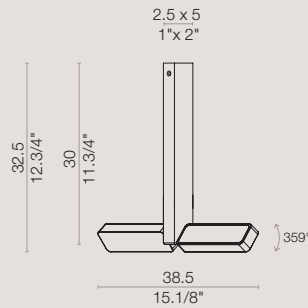
PL 70 1L



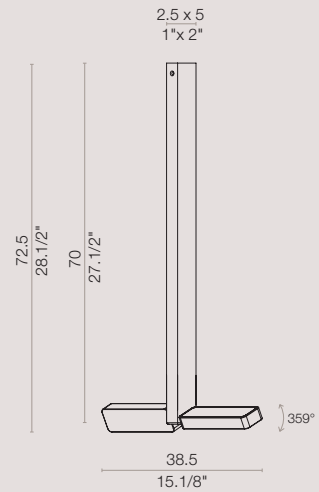
PL 10 2L



PL 30 2L



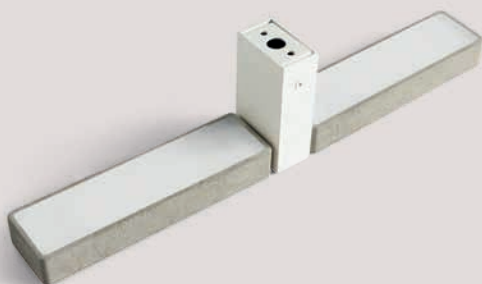
PL 70 2L



PROJECT:

TYPE:

MODEL # FINISH/COLOUR WATTAGE LIGHT SOURCE VOLTAGE



[En] → Lighting fixture in carved solid aluminium, powder-coated available in 4 colors and concrete finish. White PMMA diffuser. LED 220-240V. 359° adjustable version as wall/ceiling lamp. Frame in powder-coated aluminium, available in 4 colors. Chromed metal joint.

[It] → Corpo illuminante in alluminio ricavato dal pieno verniciato a polveri nei 4 colori disponibili e finitura cemento. Diffusore in PMMA bianco. Sorgente LED 220-240V. Versione orientabile 359° parete e plafoniera. Montatura in alluminio verniciato a polveri nei 4 colori disponibili. Snodo metallo cromato.

material

aluminium
alluminio

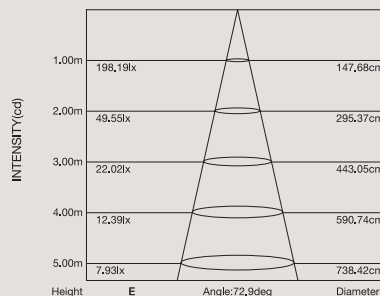
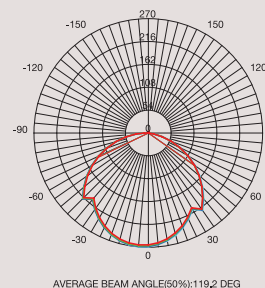
light source

LED 220-240V

120V for
NORTH AMERICA

Dimmer not included
Dimmer non incluso

photometric test BAR



equipment

AP 1L / PL 10 - 30 - 70 1L
13.5W LED 3000°K lm1450

AP 2L / PL 10 - 30 - 70 2L
27W LED 3000°K lm2900

Available 4000°K /
Disponibile 4000°K

symbols



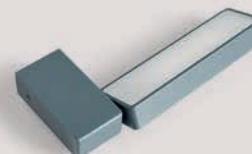
colors



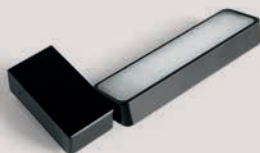
white / bianco
RAL 9010



dove / tortora
RAL 1019



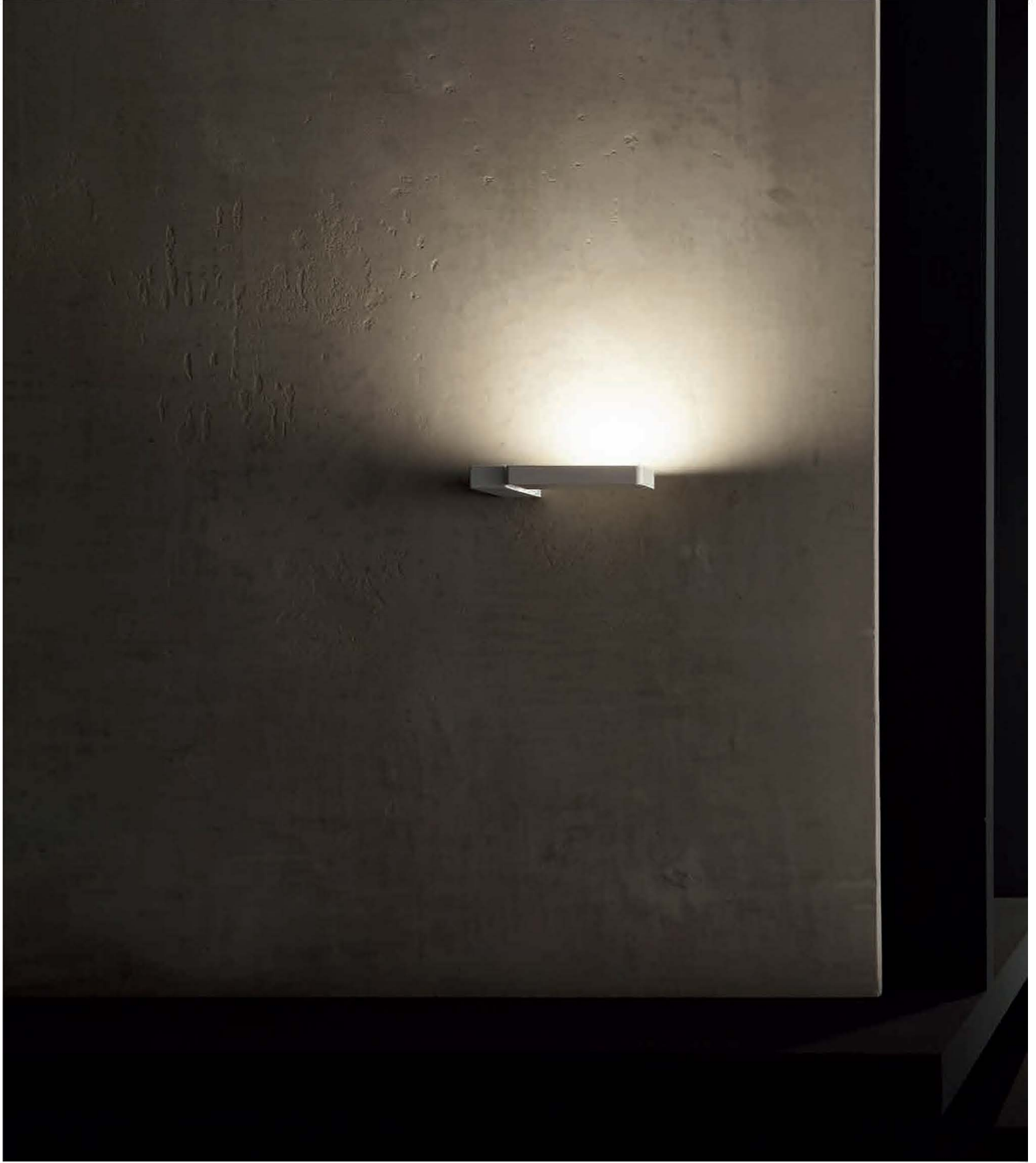
grey / grigio
RAL 7031



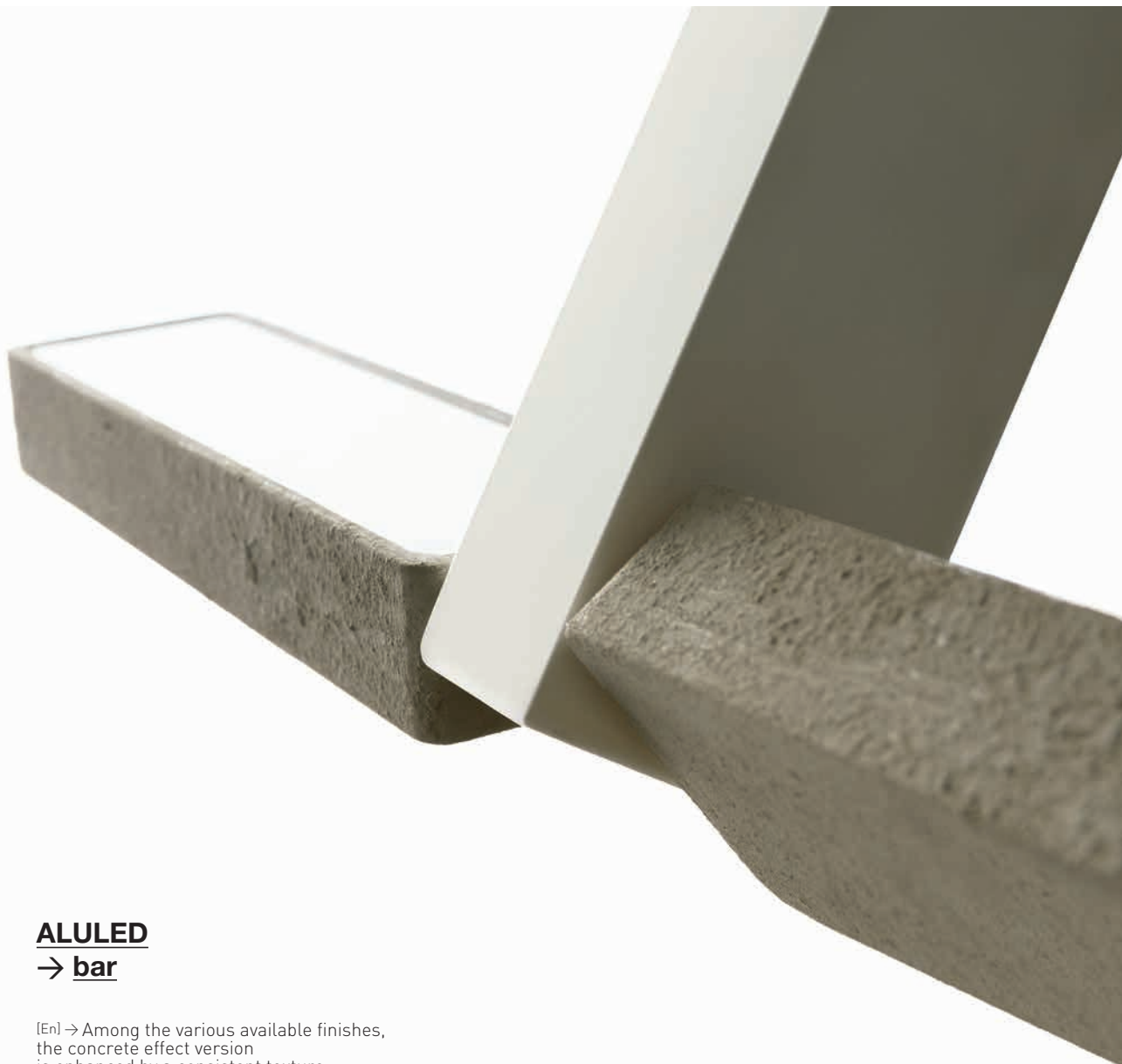
black / nero
RAL 9005



concrete / cemento







ALULED
→ **bar**

[En] → Among the various available finishes, the concrete effect version is enhanced by a consistent texture, which contrasts with the minimalist design of the fixtures. This feature is emphasized in the version with junction, because by rotating its structure it is possible to touch and feel the roughness of concrete.

[It] → Tra le varie finiture disponibili, la versione effetto cemento è arricchita da una texture materica che contrasta con il design minimale della lampada. Questa caratteristica viene sottolineata nella versione snodabile in cui è possibile toccare e sentire la rugosità del cemento nel momento in cui il corpo illuminante viene ruotato.



ALULED bar

AP 1L
wall lamp

dimensions
W 23 x DPT 12.5 cm

colors
white 9010

[En] → The junction version of ALULED BAR has a 359 degrees rotation, directing the light at wish.

[It] → La versione snodabile di ALULED BAR permette la rotazione di 359 gradi del corpo illuminante, direzionando in questo modo la luce.



[En] → Both the junction and lighting element of ALULED BAR can be fitted in different ways: structure and single lighting fixture, or structure and double lighting fixture. It is possible to change the finishes of these parts, obtaining in this way several combinations.

[It] → Snodo ed elemento luminoso di ALULED BAR possono essere composti in diversi modi: montatura e corpo illuminante singolo oppure montatura e corpo illuminante doppio. Inoltre è possibile variare le finiture di queste parti ottenendo molteplici combinazioni.